

Issue: 17

Date: 18.01.2023

In this Issue:

- Census Lunch
- Lunch Price Increase
- Molly Update
- Height & Weight checks
- Illness
- Parental Info
- Collection Password
- Nature Grant
- Reading update
- Attendance

Bridgtown Primary School
North Street,
Bridgtown,
Cannock
WS11 0AZ

Mrs S. Buzzard
Head Teacher

Phone: 01543 227100

Email:

office@

bridgtown.staffs.sch.uk

Web site:

www.bridgtown.

staffs.sch.uk



Dolce Lunches

Census Lunch



Census day is on Thursday 19th January, our lovely kitchen staff will be doing a special lunch that day, the theme this time is Chinese New Year. It's really important that your child attends school on this day and orders a school dinner if possible, as this impacts on the funding we receive, that in turn directly benefits your child. Your support with this would be greatly appreciated.

School Lunch Price Increase

From 1st April 2023 the price of a child paid school meal will increase to £2.52. These changes have been made due to rising inflation and increases in the national living wage, as a result Dolce have had to reluctantly reflect these price rises in the charges passed onto parents and carers.

Please remember that this only applies to Y3 - Y6 as KS1 children are all entitled to a free dinner.



Molly Update



This week Molly has been super busy in her new role. She has been introduced to different parts of the school and the children are slowly seeing Molly around the school. Molly was introduced to Y5 & 6 and has begun to meet individual children. Molly is adapting very well and the children are looking forward to working with her.

Height and weight check

The Families' Health and Wellbeing team will be visiting the school on Tuesday 31st January for reception and Wednesday 1st February for Y6. The team will complete the height and weight measurements for Reception and Year 6 children. Further information has already been sent out to parents.

Midlands Partnership
NHS Foundation Trust
A Keele University Teaching Trust

Bridgtown Primary School

HAND IN HAND - BUILDING FOR THE FUTURE



Illness



If your child is unwell and has had sickness or diarrhoea then they are unable to come to school for a **full 48hours** from their last episode.

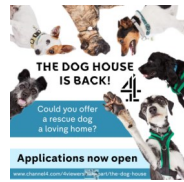
For example, if your child has vomited on a Monday at 1.30pm and then again at 6pm, they are unable to return to school until Thursday (a **full 48hours** after their last episode).

Even if they have recovered the bug remains in them and we don't want other children to catch it.

Parental Information

The Dog House

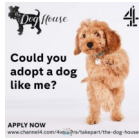
The Dog House, which is about to return for a new series, is starting the search again for people who can offer a loving home to a rescue dog and share their reasons for doing so. We wondered if you might be able to help?



In previous series, we found that there were many reasons people might consider bringing a rescue dog into their life; to help combat loneliness, extra company for a child, and to encourage getting out more. For children specifically, having a dog in your home has been proven to help with social skills and impulse control, and even improve self-esteem. Dogs are always happy to see you when you get home from school, and their love is unconditional - the ideal confidant and an ever-willing playmate!

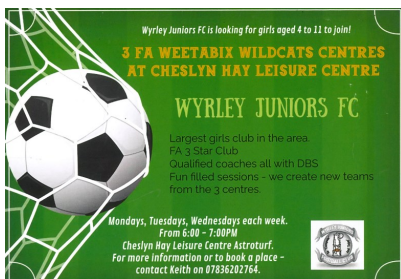
Could you provide a loving home for a rescue dog? The Channel 4 series, The Dog House is looking for couples, individuals, friends and families who are seriously considering bringing a rescue dog into their lives and are willing to share their reasons for doing so.

Please follow this link to apply: <https://www.channel4.com/4viewers/takepart/the-dog-house>



Girls Football

Calling all young girls who are interested in being active and would like to try football.



Family First

The Families First service works in a localised way with the key people needed to meet the needs of a community.



The service covers the whole of Staffordshire and produce the magazine below:

https://issuu.com/sevenstarmedia/docs/ff_winter2022_digital160123

Free parental Training

Do you have a child who has a diagnosis of ASC or has not yet been referred to our service?

If the courses listed opposite are of interest to you, all Delivered by the Specialist Teaching Support Service Autism Inclusion Team, then please contact:

Rachel.cox@staffordshire.gov.uk

Lingotot



During February Half Term, Lingotot are running 4 days of holiday camps from 8.30am until 3.30pm at St Peter's CE Primary Academy, Hednesford, WS12 1BE.

Lingotot camps are designed to be fun and interactive for all ages from 5-11 regardless of starting point with languages and parents come back holiday after holiday because their children love it. Lingotot include activities such as scavenger hunts; woodland walks and forest school crafts; arts and crafts including food tasks; and team games and challenges to make sure everyone is supported and enjoys their time. February Half Term Camps are ready to book and do get booked up quickly as places are limited. If you are interested in booking the holiday camps, follow the links below for more information and bookings. Until the end of January, the camps are listed at our January Sale price of £24. If you have siblings attending, discounts are available.

Monday 20th February: <https://www.lingotot.com/classes/8155>

Tuesday 21st February: <https://www.lingotot.com/classes/8156>

Wednesday 22nd February: <https://www.lingotot.com/classes/8157>

Thursday 23rd February: <https://www.lingotot.com/classes/8158>



TO BOOK YOUR PLACE PLEASE EMAIL RACHEL.COX@STAFFORDSHIRE.GOV.UK



FREE Parent/Carer Training

Delivered by the Specialist Teaching Support Service Autism Inclusion Team

PLEASE NOTE - THIS TRAINING IS FOR PARENTS/CARERS OF CHILDREN WHO HAVE A DIAGNOSIS OF ASC (inc. those not yet referred to our Service)

DATE	TIME	COURSE TITLE	LOCATION
16.03.23	10.00-11.30	Understanding Autism	Microsoft Teams
27.04.23	10.00-12.00	Sharing Diagnosis	Stafford Children's Centre
11.05.23	10.00-11.30	Understanding Autism	Microsoft Teams
11.05.23	10.00-12.00	Self-Harm	Stafford Children's Centre
18.05.23	09.00-16.00	(AT/Hi/VI) Transition to Adulthood Day >Please see overview for more information about this session	Stafford Children's Centre
25.05.23	09.30-11.30	Supporting Emotional Regulation	Stafford Children's Centre
29.06.23	09.00-16.00	Bitesize Training Courses (Sessions TBC)	Stafford Children's Centre

Diary Dates:

Thursday 26th January

Young Voices

Wednesday 8th February

Safer Internet Day

Wednesday 15th February

Parents Evening

Thursday 16th February

School closes for Half Term

Friday 17th February

Staff Training Day

Monday 27th February

School re-opens

Thursday 2nd March

World Book Day



Collection

At the end of the school day, if someone different is picking up your child you **MUST** inform the school office. You will be required to leave a password which will then be passed on to the class teacher.



Nature Grant

We have been lucky enough to receive a Nature Grant to enhance our outdoor area.

Last week Reception children helped put up our new bird feeders, bird boxes and bird table.

We look forward to welcoming the wildlife to the garden.



Reading Update

The teachers will now write in your child's reading journal in the calendar section of the diary.

The front section, 'Reading Record', is where we ask parents to record when they hear their child read or for the children to note what books they are reading for pleasure.



Attendance:

The winner of the termly attendance goes to **Yellow Class**. Congratulations!

As a reward, this class will now have a non uniform day. A text has already been sent out.

The whole school attendance figures from 9th –13th Jan 2023 was **94.6%**

This is above the National School Average for this week.



Attendance Award

We would like to announce that we have won a National Schools Attendance Award having been recognised as being in the top 25% of similar FFT schools in England.

Wow! Congratulations everyone, keep it up!



Class	%		%
Blue	88.1	Green	91
Purple	92.7	Orange	98.2
Red	93.8	Yellow	98.8
3DB	94.2	3LB	98.3
4ES	91.4	4HC	98.5
5AR	92.2	5KI	93.3
6MO	97	6HT	97.6

